

	F04	F05	F06	F07	F08	F09	F10	F11	F12	F13	F14	F15	F15 Poly Proj.	F16 (Linear Projection)	F16 (Polynomial Projection)
Category 1: First-Time First Year	1685	1587	1640	1678	1708	1771	1801	1908	1734	1642	1500	1316	1181	1575	1254
Full-Time	1411	1379	1416	1401	1658	1594	1631	1681	1527	1489	1337	1221		1451	
Part-Time	274	208	224	277	50	177	170	227	207	153	163	95		124	
< 20	1234	1178	1239	1241	1268	1240	1297	1348	1275	1148	1080	1062		1151	
20-24	205	190	179	193	218	251	266	243	237	229	221	142		220	
25+	234	214	214	238	217	280	238	316	222	265	199	112		208	
Pell Receptient	849	738	772	793	883	1048	1184	1213	1100	1065	1002	880		925	
Veterans (excludes active duty/reserve)	22	22	23	21	17	18	21	9	18	22	9	7		10	
Residence Hall Students							251	252	308	273	260	255	217	239	
Oneida County Residents	1093	1050	1109	1128	1135	1237	1212	1292	1175	1138	1039	930		1105	
Herkimer/Madison/Lewis Residents	269	207	241	241	247	234	250	264	245	227	209	176		211	
Other Geographic Residents	323	330	290	309	326	300	320	333	286	250	233	193		231	
	F04	F05	F06	F07	F08	F09	F10	F11	F12	F13	F14	F15	F15 Poly Proj.	F16 (Linear Projection)	F16 (Polynomial Projection)
Category 2: Returning/Continuing	3279	3099	3018	3088	3160	3540	3976	4076	3991	4045	3616	3135	2960	3910	2758
Full-Time	2196	2160	2065	2150	3076	2519	2839	2904	2741	2841	2450	2105		2727	
Part-Time	1083	939	953	968	84	1021	1137	1172	1250	1204	1166	1030		1183	
< 20	809	738	818	635	653	692	713	649	630	638	608	579		567	
20-24	1285	1275	1164	1362	1388	1440	1647	1702	1598	1670	1476	1344		1635	
25+	1184	1085	1035	1087	1111	1408	1616	1724	1763	1735	1531	1212		1707	
Pell Receptient	1354	1281	1221	1294	1344	1765	2296	2557	2469	2509	2168	1911		2258	
Veterans (excludes active duty/reserve)	99	97	100	84	81	83	103	87	95	138	112	79		103	
Residence Hall Students							243	254	181	202	202	184	186	166	
Oneida County Residents	2524	2358	2338	2365	2450	2726	3080	3161	3092	3066	2809	2482		3041	
Herkimer/Madison/Lewis Residents	412	380	319	384	367	421	493	526	530	554	455	362		503	
Other Geographic Residents	343	361	361	339	343	393	364	361	330	368	302	244		306	

	F04	F05	F06	F07	F08	F09	F10	F11	F12	F13	F14	F15	F15 Poly Proj.	F16 (Linear Projection)	F16 (Polynomial Projection)
Category 3: Transfer	284	286	260	268	313	349	346	394	393	341	256	348	135	362	366
Full-Time	225	221	204	208	308	267	261	303	294	263	205	251		273	
Part-Time	59	65	56	60	5	82	85	91	99	78	51	97		90	
< 20	87	81	82	61	74	83	79	80	73	56	47	75		61	
20-24	104	101	93	108	118	113	140	165	157	147	114	154		159	
25+	93	103	83	98	118	153	127	149	163	138	95	119		142	
Pell Receptient	123	115	125	110	147	189	203	253	216	207	143	185		174	
Veterans (excludes active duty/reserve)	11	12	4	11	8	9	16	12	17	8	11	14		13	
Residence Hall Students							7	14	24	21	27	32		47	
Oneida County Residents	161	159	145	156	182	219	205	230	221	183	155	194		208	
Herkimer/Madison/Lewis Residents	51	51	50	35	67	72	73	86	73	65	33	58		66	
Other Geographic Residents	72	76	65	77	64	58	62	72	92	78	49	85		73	
	F04	F05	F06	F07	F08	F09	F10	F11	F12	F13	F14	F15	F15 Poly Proj.	F16 (Linear Projection)	F16 (Polynomial Projection)
Category 4: High School	820	1012	977	1010	1003	1007	1028	1262	1327	1391	1754	1875	1833	1741	2031
Full-Time	19	19	32	7	7	23	28	16	39	23	32	55		40	
Part-Time	801	993	945	1003	996	984	1000	1246	1288	1368	1722	1820		1701	
< 20	804	982	939	999	982	995	1022	1259	1323	1386	1745	1875		1744	
20-24	0	1	4	1	5	4	3	1	1	0	5	0		2	
25+	0	1	3	0	7	8	3	0	3	0	2	0		2	
Pell Receptient	1	2	2	4	8	2	1	2	6	1	1	2		2	
Veterans (excludes active duty/reserve)	0	0	0	0	0	0	0	0	0	0	0	0		0	
Residence Hall Students	0	0	0	0	0	0	0	0	0	0	0	0		0	
Oneida County Residents	723	936	903	895	887	890	890	1155	1217	1259	1550	1640		1545	
Herkimer/Madison/Lewis Residents	94	76	73	113	115	115	136	107	106	132	200	227		192	
Other Geographic Residents	3	0	1	2	1	2	2	0	0	0	3	5		2	
	F16 Projected total												6109	7588	6410

|

	S04	S05	S06	S07	S08	S09	S10	S11	S12	S13	S14	S15	S16 (Linear Projection)	S16 (Polynomial Projection)
	(ESS)	(ESS)	(ESS)	(ESS)	(ESS)	(ESS)	(ESS)	(EOT)	(EOT)	(ESS)	(EOT)	(EOT)		
Category 1: First-Time First Year	687	520	487	442	498	523	653	593	468	535	415	373	436	370
Full-Time	355	271	252	244	283	330	460	446	352	357	297	247		
Part-Time	332	249	235	178	215	193	193	147	116	178	118	126		
< 20	345	189	234	205	222	210	165	157	126	158	80	97		
20-24	134	158	121	96	136	121	260	242	162	166	143	137		
25+	206	169	128	118	134	187	228	194	180	211	192	139		
Pell Receptient							407	430	314	340	283	240		
Veterans (excludes active duty/reserve)	22	15	15	10	7	10	16	17	13	17	9	0		
Residence Hall Students							58	69	36	45	22	31		
Oneida County Residents	538	366	368	299	377	393	497	450	333	405	305	267		
Herkimer/Madison/Lewis Residents	75	56	54	53	58	64	81	56	64	59	46	43		
Other Geographic Residents	74	98	65	70	63	66	68	82	59	62	59	54		

	S04	S05	S06	S07	S08	S09	S10	S11	S12	S13	S14	S15	S16 (Linear Projection)	S16 (Polynomial Projection)
	(ESS)	(ESS)	(ESS)	(ESS)	(ESS)	(ESS)	(ESS)	(EOT)	(EOT)	(ESS)	(EOT)	(EOT)		
Category 2: Returning/Continuing	4429	4124	3973	3915	3977	4294	4741	5054	5159	5019	4708	4188	4916	3794
Full-Time	2996	2973	2955	2879	2951	3132	3559	3759	3787	3654	3477	3062		
Part-Time	1433	1151	1018	1036	1026	1162	1182	1295	1372	1365	1231	1126		
< 20	1704	710	1371	1387	1426	1451	747	776	768	730	704	673		
20-24	1412	2042	1424	1372	1371	1531	2222	2381	2373	2342	2163	1949		
25+	1313	1369	1177	1154	1174	1306	1772	1897	2018	1944	1841	1566		
Pell Receptient							2543	2993	3193	3103	2899	2578		
Veterans (excludes active duty/reserve)	113	111	110	116	90	102	104	109	95	126	131	102		
Residence Hall Students							422	400	388	355	385	363		
Oneida County Residents	3273	3046	2890	2899	2927	3177	3540	3740	3769	3733	3503	3137		
Herkimer/Madison/Lewis Residents	572	550	507	474	498	559	625	689	698	690	647	541		
Other Geographic Residents	584	528	576	542	552	558	512	578	571	527	489	436		

	S04	S05	S06	S07	S08	S09	S10	S11	S12	S13	S14	S15	S16 (Linear Projection)	S16 (Polynomial Projection)
	(ESS)	(ESS)	(ESS)	(ESS)	(ESS)	(ESS)	(ESS)	(EOT)	(EOT)	(ESS)	(EOT)	(EOT)		
Category 3: Transfer	164	179	191	179	188	211	236	242	279	265	168	147	225	105
Full-Time	139	135	151	139	145	171	181	186	209	202	124	108		
Part-Time	25	44	40	40	43	40	55	56	70	63	44	39		
< 20	55	42	67	59	79	73	41	41	40	28	21	16		
20-24	62	85	70	58	66	79	105	122	122	115	78	71		
25+	47	51	54	62	41	59	90	79	117	122	69	60		
Pell Receptient							114	150	182	172	98	84		
Veterans (excludes active duty/reserve)	5	4	8	4	4	9	10	11	5	26	9	0		
Residence Hall Students							20	25	29	19	15	17		
Oneida County Residents	96	110	117	110	126	135	154	142	164	152	110	84		
Herkimer/Madison/Lewis Residents	33	30	32	32	30	35	38	39	44	58	25	28		
Other Geographic Residents	35	39	42	37	32	41	43	56	64	49	29	26		

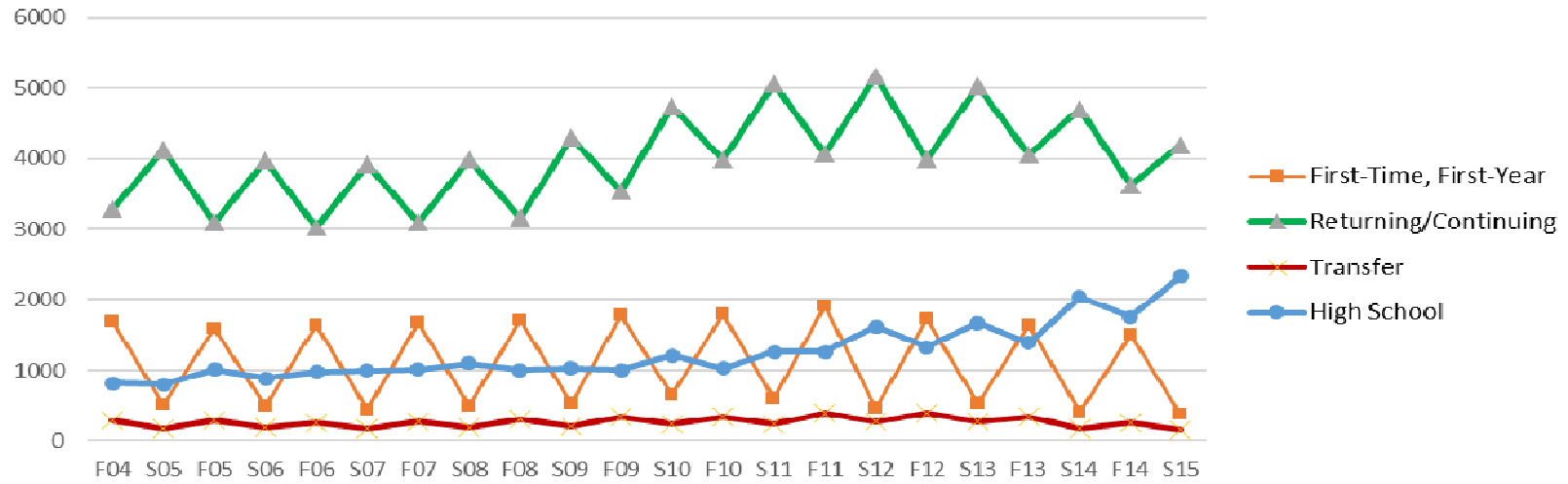
	S04	S05	S06	S07	S08	S09	S10	S11	S12	S13	S14	S15	S16 (Linear Projection)	S16 (Polynomial Projection)
	(ESS)	(ESS)					(ESS)	(EOT)	(EOT)	(ESS)	(EOT)	(EOT)		
Category 4: High School		795	882	995	1101	1031	1209	1261	1621	1675	2038	2333	2210	2931
Full-Time		25	24	35	13	29	21	25	35	68	98	113		
Part-Time		770	858	960	998	1002	1188	1236	1586	1607	1940	2220		
< 20		785	862	977	996	1011	1200	1254	1614	1666	2020	2321		
20-24		4	2	0	4	12	8	6	5	5	17	10		
25+		0	2	2	1	3	1	1	2	0	1	2		
Pell Receptient							2	5	2	10	2	4		
Veterans (excludes active duty/reserve)		0	0	0	0	0	0	0	0	0	0	0		
Residence Hall Students							0	0	0	0	0	0		
Oneida County Residents		729	804	905	912	931	1078	1133	1454	1518	1824	2028		
Herkimer/Madison/Lewis Residents		64	78	89	97	100	131	127	157	139	180	296		
Other Geographic Residents		2	0	1	2	0	0	1	3	2	2	4		
													7787	7200

S16 Projected total

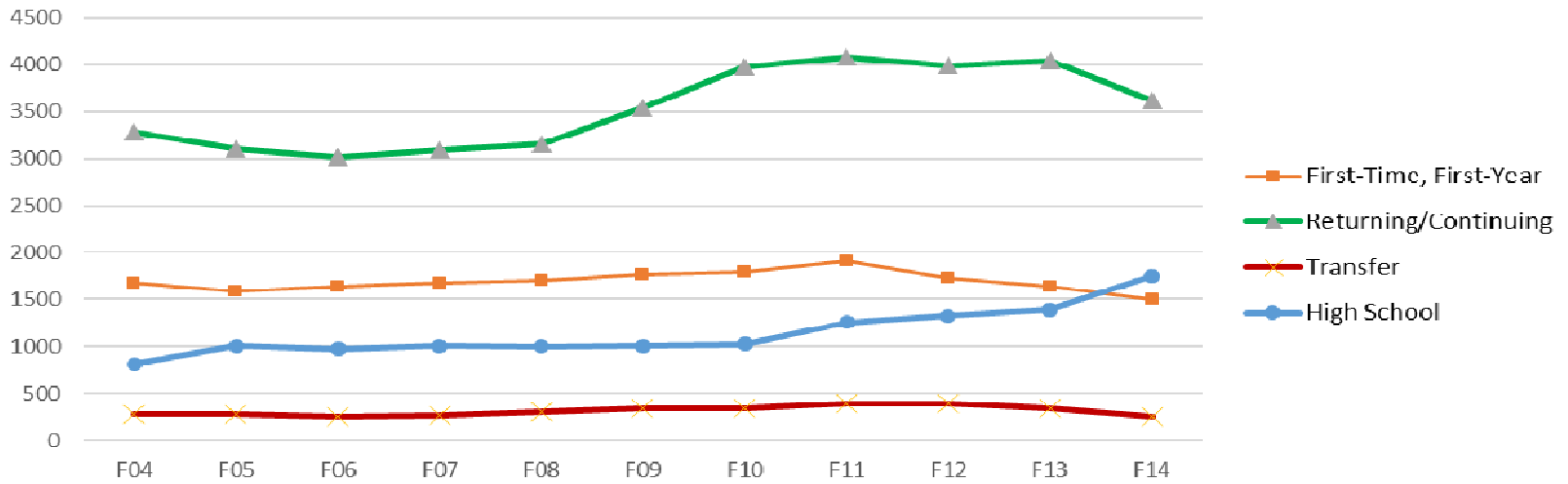
7787

7200

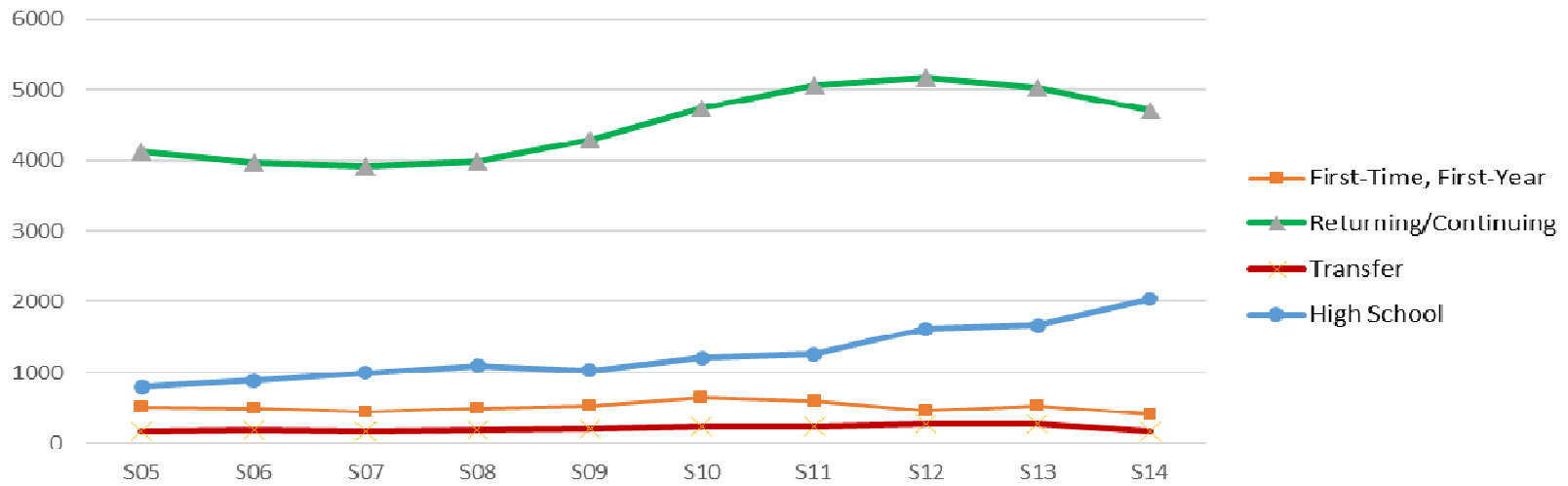
Enrollment: Fall 2004 - Spring 2015



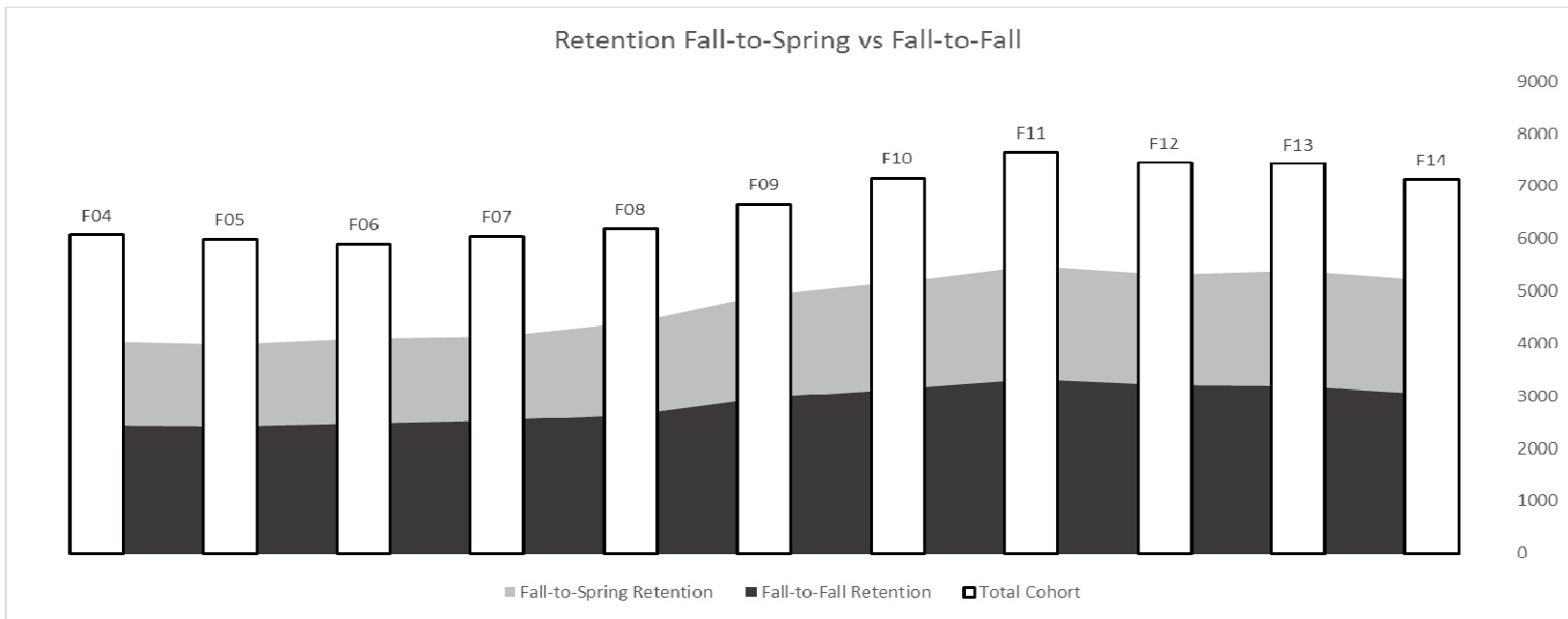
Enrollment: Fall 2004 - Fall 2014



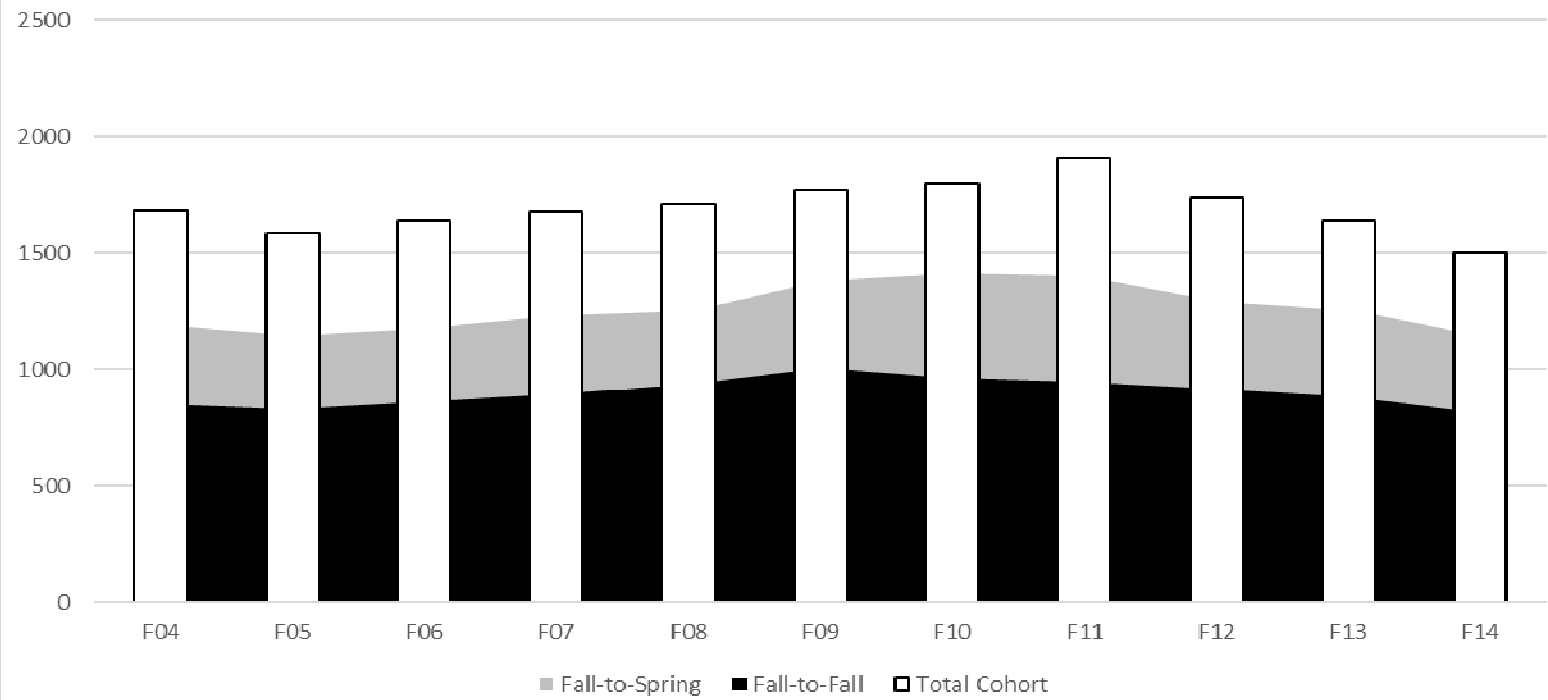
Enrollment: Spring 2005 - Spring 2014



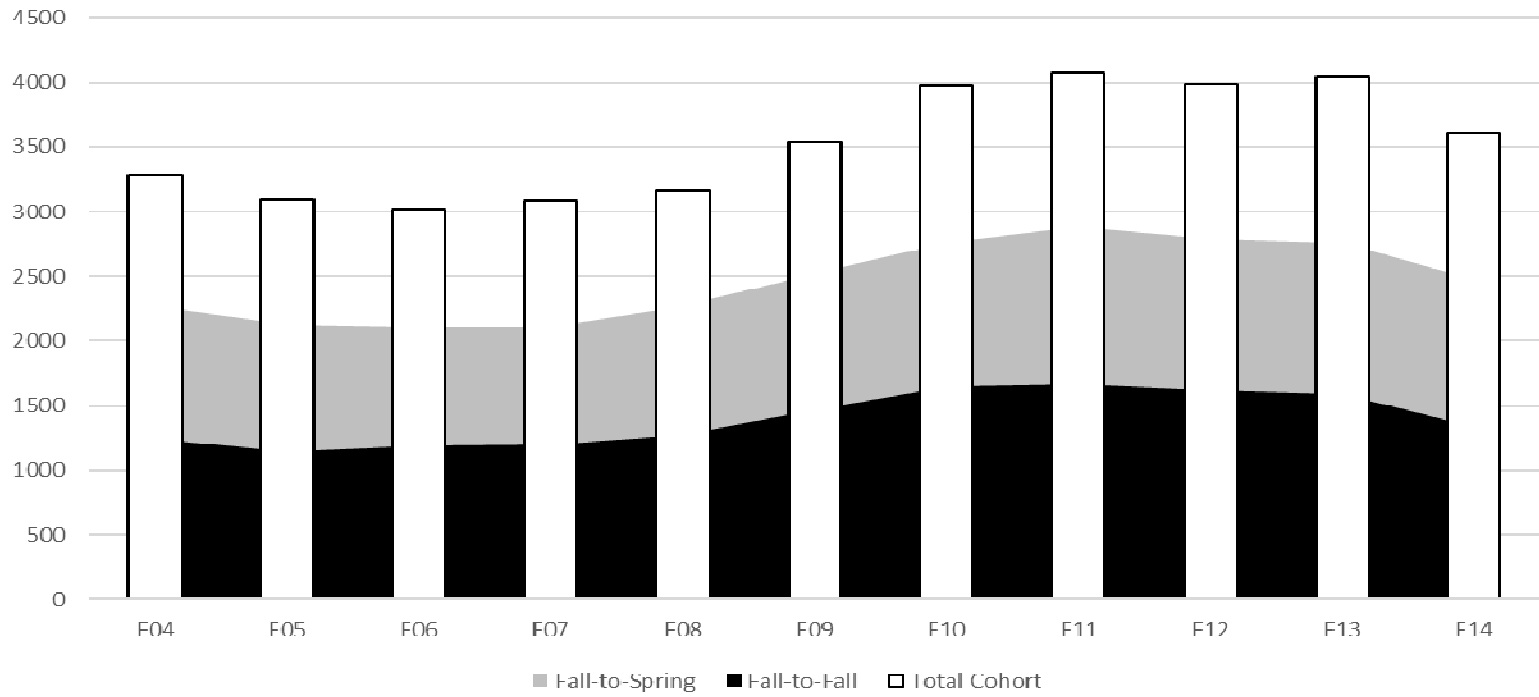
Retention Fall-to-Spring vs Fall-to-Fall



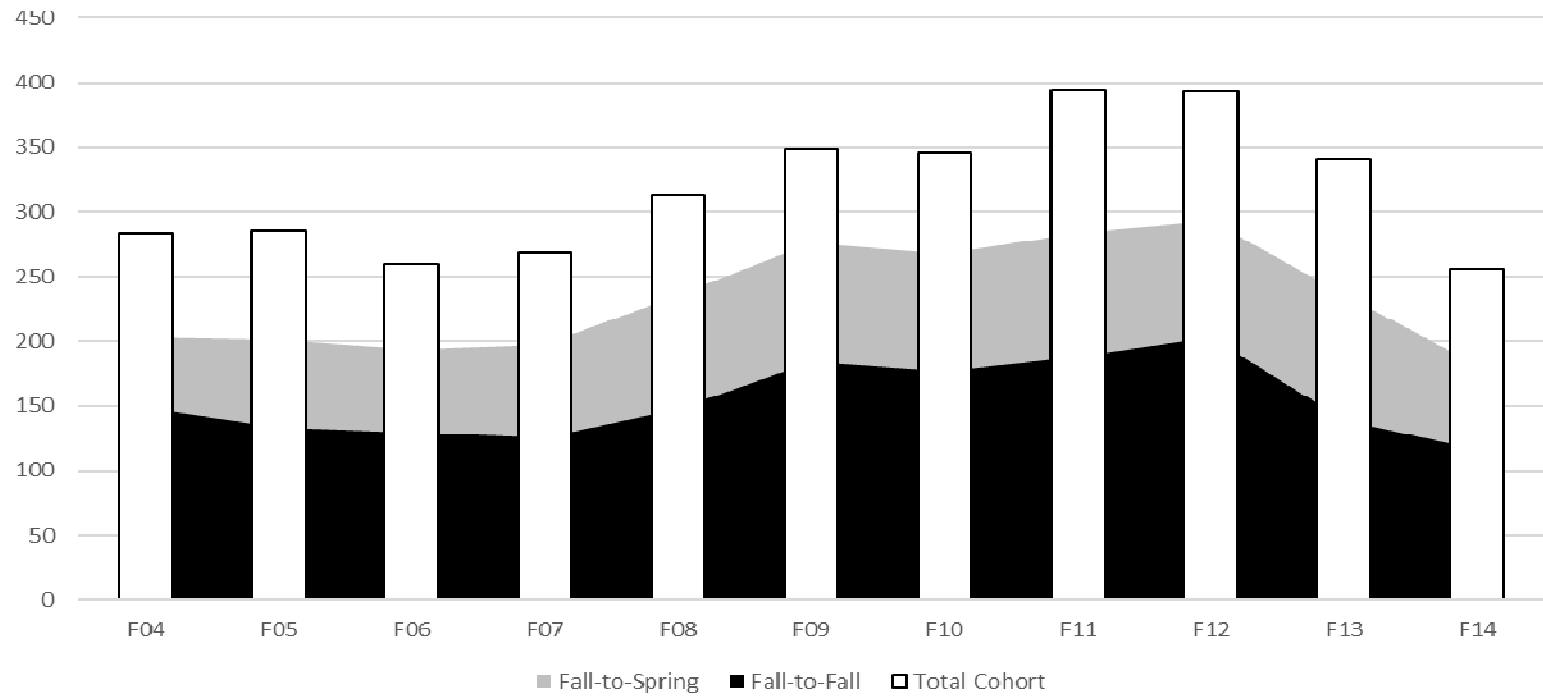
First-Time, First-Year Retention Fall-to-Spring vs. Fall-to-Fall



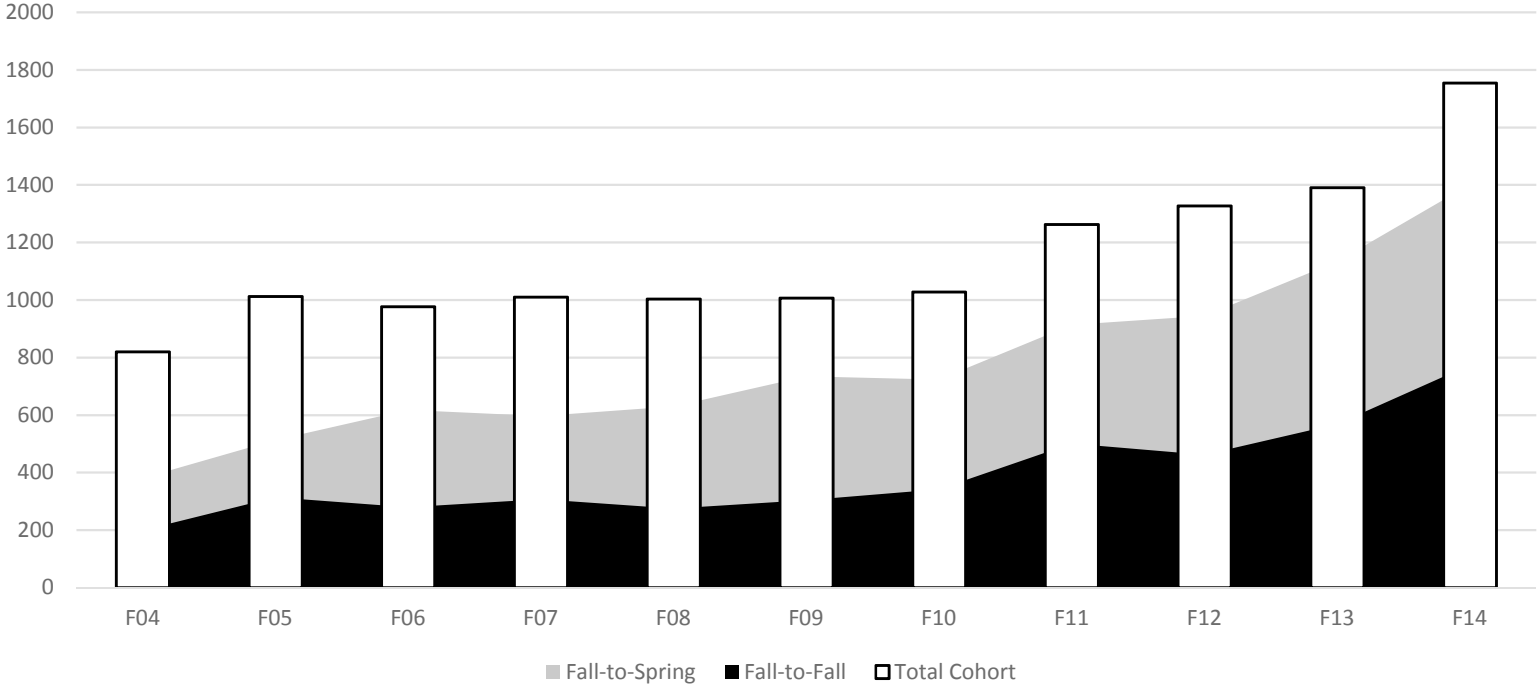
Returning/Continuing Retention Fall-to-Spring vs. Fall-to-Fall



Transfer Retention Fall-to-Spring vs. Fall-to-Fall



Dual Credit Retention Fall-to-Spring vs. Fall-to-Fall



	Projections	Coefficient of Determination (R ²)
Fall '16		
First-Time, First-Year	1254	0.9581
Returning/Continuing	2758	0.9748
Transfer	366	0.6728
Dual Credit	2031	0.976
TOTAL/Average R²	6409	0.8954
Full Cohort Projection	6763	0.9863

	Projections	Coefficient of Determination (R ²)
Spring '16		
First-Time, First-Year	370	0.8259
Returning/Continuing	3794	0.9947
Transfer	105	0.8964
Dual Credit	2931	0.9777
TOTAL/Average R²	7200	0.9237
Full Cohort Projection	7273	0.9958